

TEMPLEWORK LA



TEMPLEWORK LA Studio Protocols for COVID-19 Safety



It is hard to fathom what we have been through as a community, nation and world over the past few months. Our business is to nurture, bring peace of mind, and heal the body. Please know these events have affected us greatly.

We are happy to be returning soon to what we know best.
Human connection and Healing!

We have been hard at work implementing new sanitizing and disinfecting guidelines from CAMTC California Massage Therapy Council, ABMP Associated Bodywork & Massage Professionals, CDC Centers for Disease Control and Prevention, CDPH California Department of Public Health, and FSMTB Federation of State Massage Therapy Boards. Some of the measures listed below are mandated and some might be temporary. We thank you for understanding.



HEPA Air Purifiers in each room to ensure comfort



Masks are required by both therapist and client



Physical distancing and limited lobby occupancy



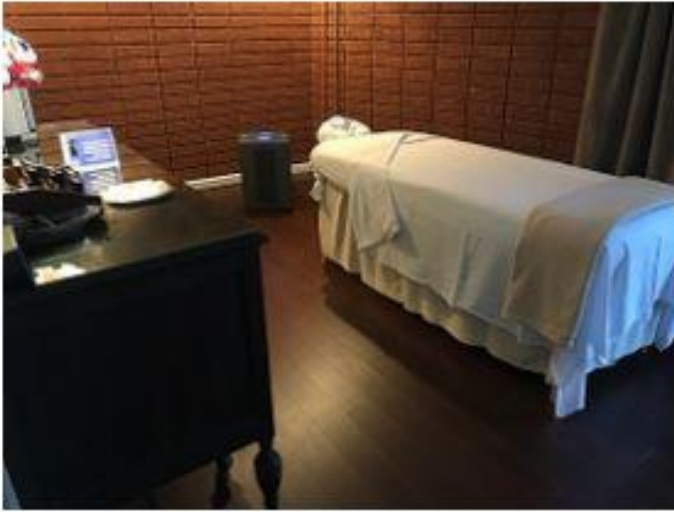
Wellness checks upon entry to studio



Sanitizing stations located throughout



Additional cleaning protocols in the studio



Each room is thoroughly disinfected before each client, contains all the proper amenities, has been minimized, and includes a HEPA Air Purifier.



We have a sanitizing station upon entry.

Each client will be given disinfected footwear to move about the studio germ free.



We're no longer taking walk-ins and clients will enter individually to ensure our waiting area is safe and social distancing guidelines are followed.

Payment processing will be seamless after your session.

Being that our business is structured around taking care of our clients, we are concerned about our elderly population and that of anyone who is immunocompromised. In accordance with extended shelter-in-place recommendations, to protect our more vulnerable populations, we will refrain from working with clients with compromised immune systems, clients aged 65 or above, or clients in other elevated at-risk categories at this time. We so look forward to seeing you when the time is right. Thank you for understanding.

For **Existing Clients** we have a COVID-19 Consent for Treatment form that you can fill out in advance and either bring with you at the time of your session, or scan back to our office at info@templeworkla.com

For **New Clients** please fill out our TEMPLEWORK LA Intake form as well as our COVID-19 Consent for Treatment Form. You can either bring with you at the time of your session, or scan back to our office at info@templeworkla.com

**Both forms can be obtained from our website drop down under
Book Online.**

**Your comfort is important to us and we look forward to
introducing our updated studio to you!**

**Please direct any questions you may have to
info@templeworkla.com**

Until then TEMPLEWORK LA wishes you well...

-Anna Marie